

F

M

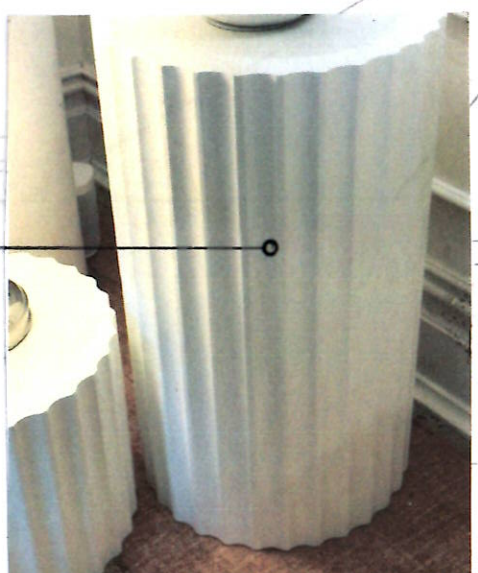
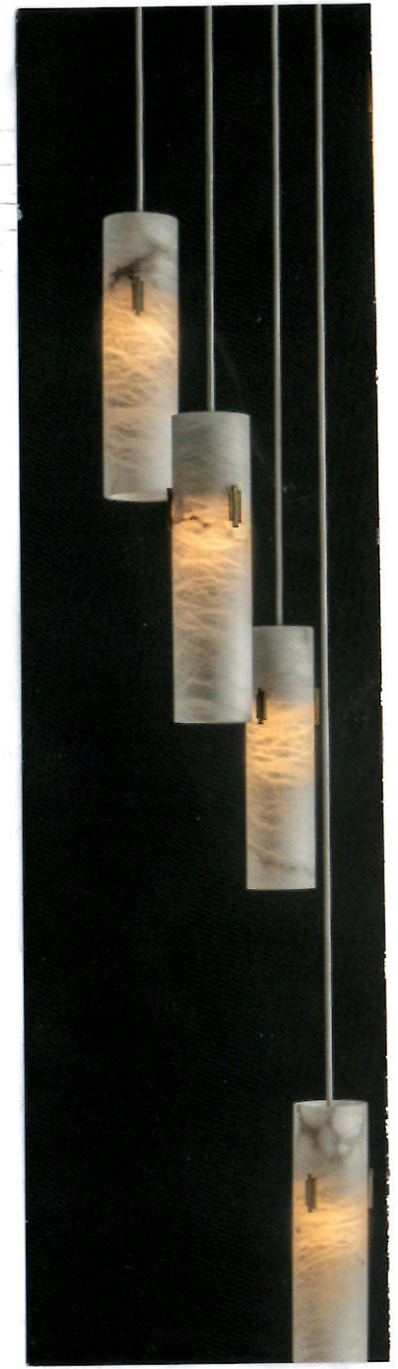
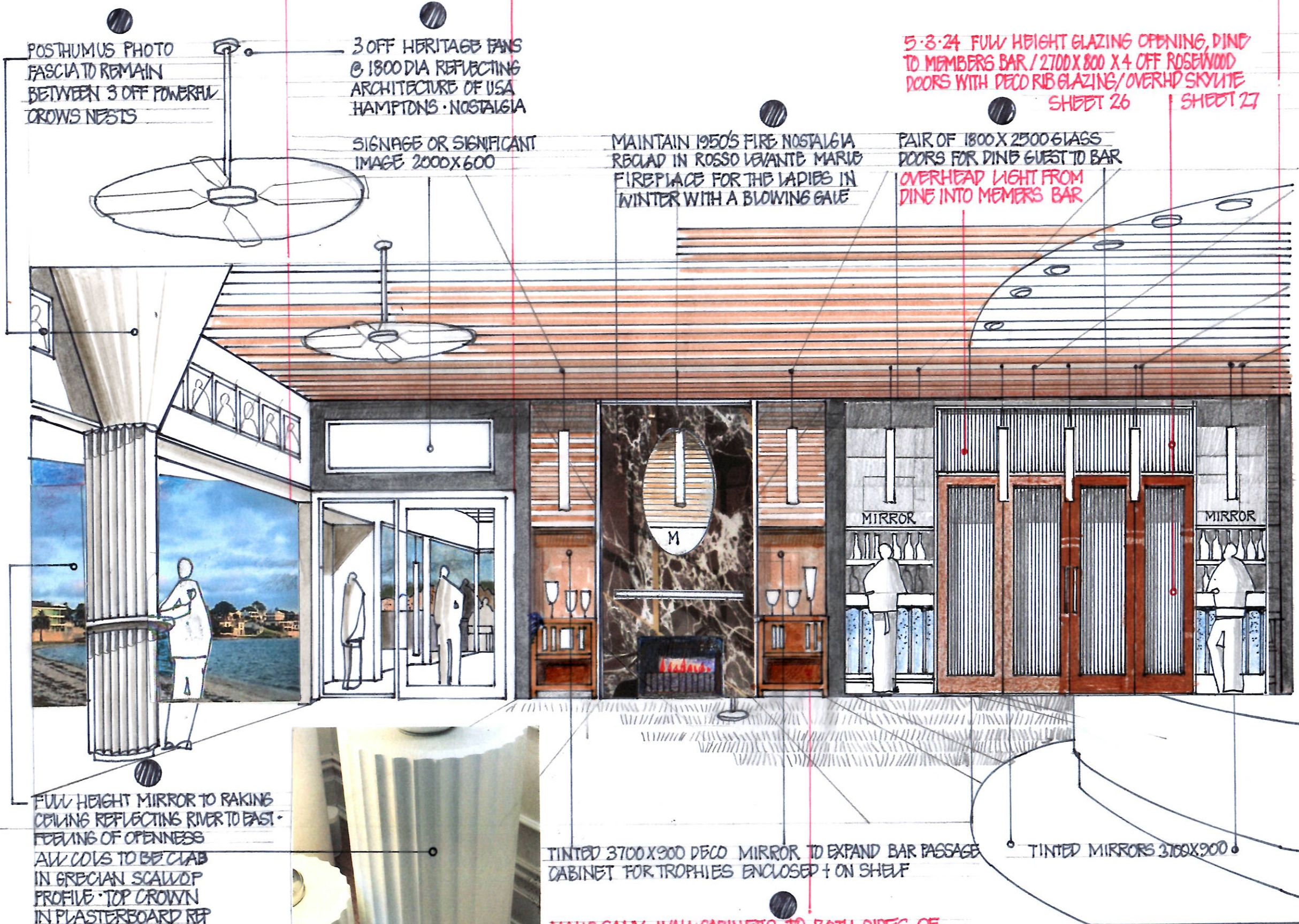
E

SHEET 24
28 FEB 24

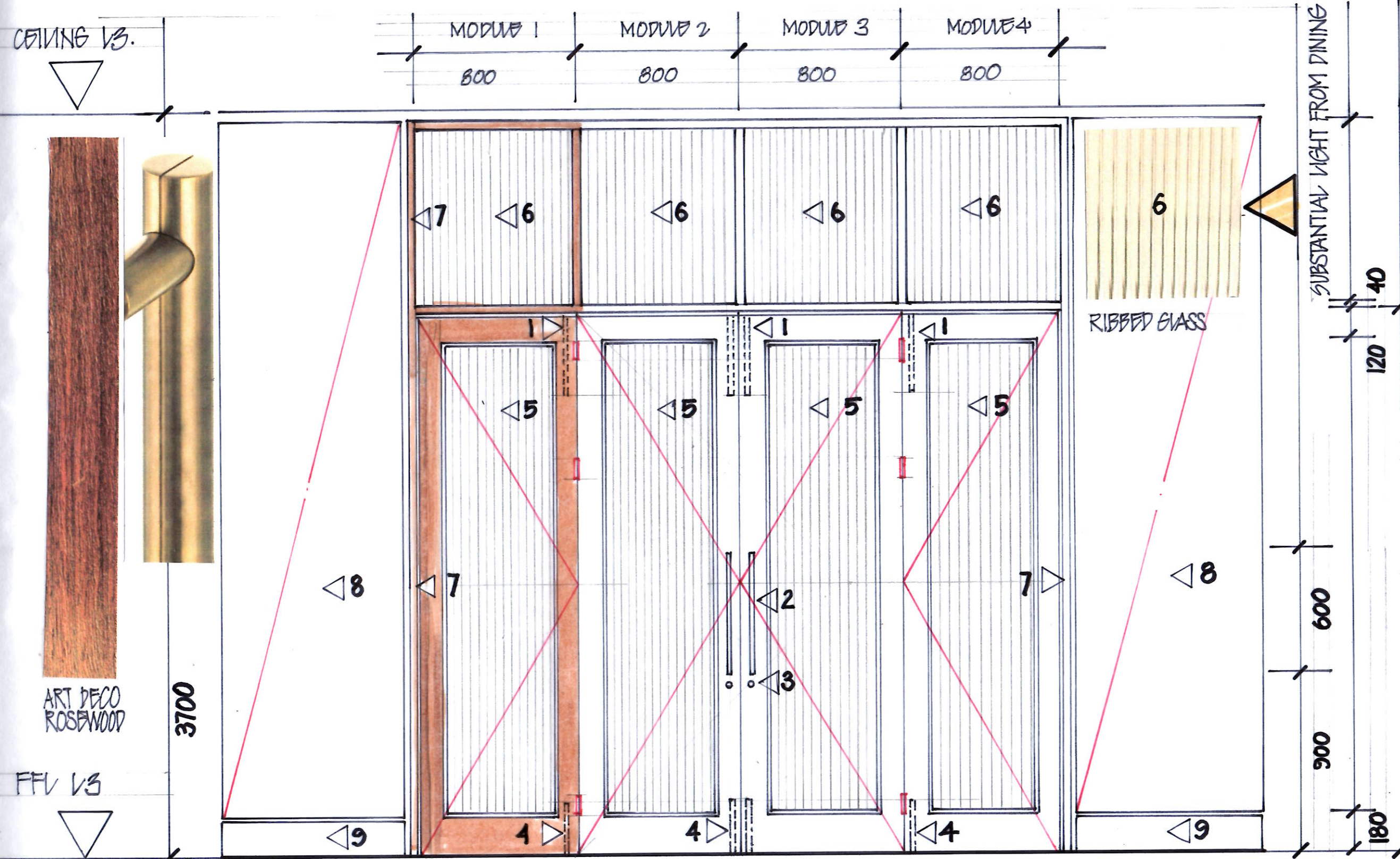
SHEET 24
5-3-24

T. 5 HRS

T. 1.5 HRS



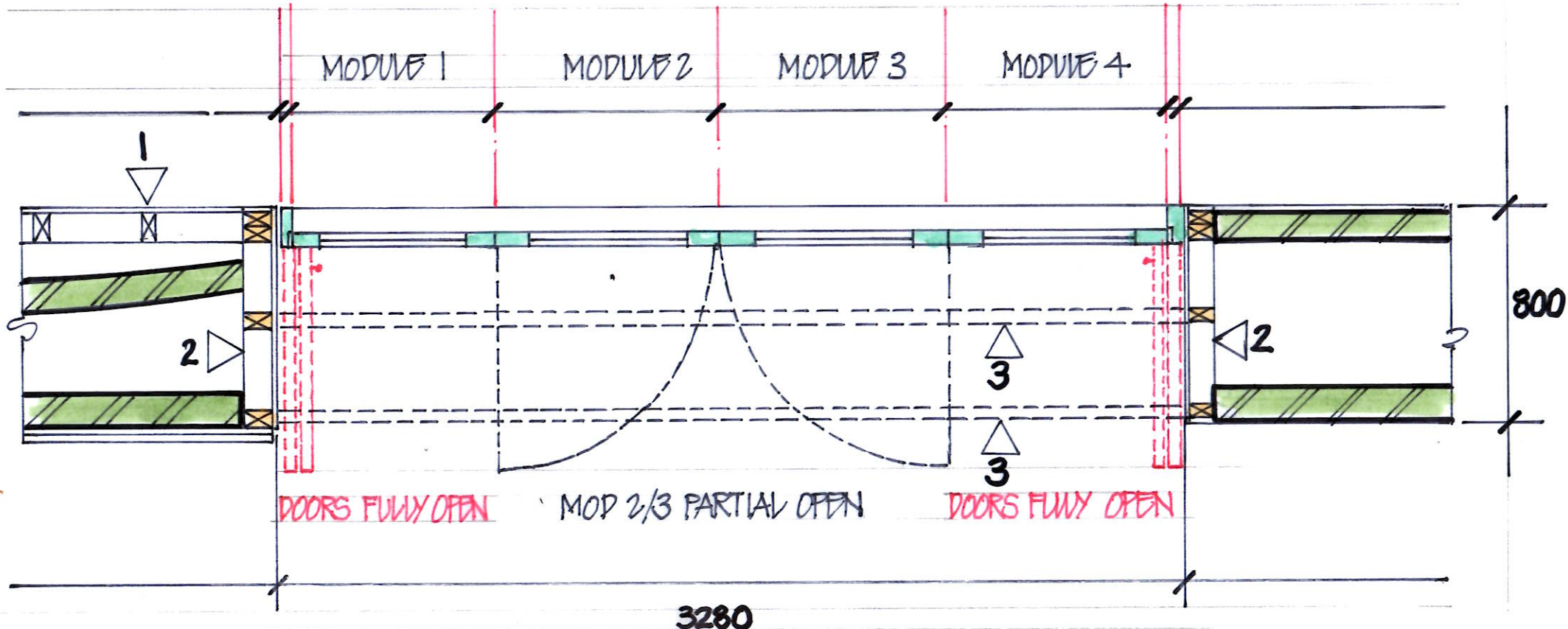
CLARBONT YACHT CLUB RENOVATION
ARCFORMS DESIGNER
DRAWN PAVLO SZYJAN STUDIO 28 FEB 2024



- LEGEND**
- 01 LONG UPPER REBATE DR BOLT
 - 02 BRITISH BRASS CP BRASS HANDLE 600X40
 - 03 BRASS DOOR SNIB.
 - 04 BOTTOM REBATE DOOR BOLT
 - 05 6MM RIBBED GLASS PANEL 20X20 GLAZING BEAD
 - 06 UPPER DOOR HI VITE PANELS IN RIBBED GLASS / 20X20 GLAZING BEAD.
 - 07 40X170 DOOR FRAME
 - 08 6MM SMOKED BRONZE MIRROR ON 16MM MDF FRENCH HOOK FIXING / OR OTHER MIRROR TBD.
 - 09 180MM SKIRTING.

ELEVATION OF DIVIDE BIFOLD DOORS BETWEEN DINE + MEMBERS BAR 1:20

CLAREMONT YACHT CLUB RENOVATION
ARCFORMS DESIGNER
DRAWN PAWO SZYJAN STUDIO
5 MARCH 24.



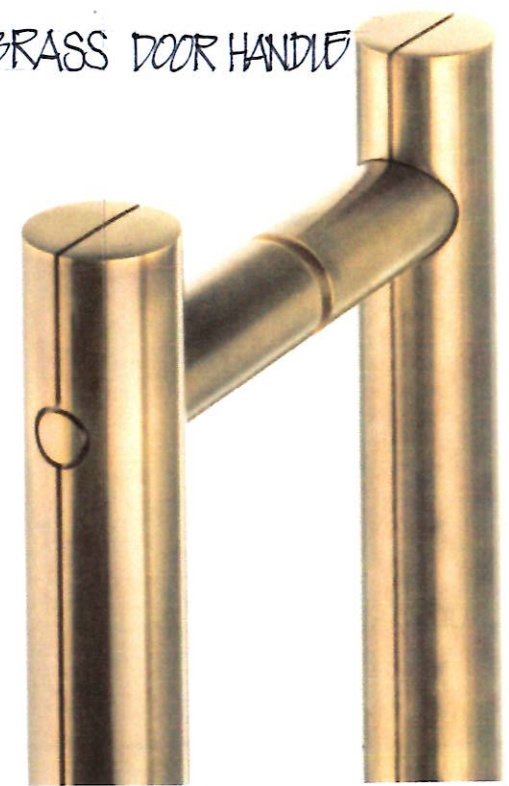
- LEGEND**
- 01 45X90 STUD FRAME PLASTERED FACING TO COVER EXIST CURVED BWK
 - 02 INTERNAL 45X90 STUD FRAME TO HANG DOORS
 - 03 LWS TO REPLACE TRUSS + CEILING SUPPORT / ENG DETAIL

● PLAN OF DIVIDE DOOR BETWEEN DINE & MEMBERS BAR

RIBBED GLASS SAMPLE ONLY



BRASS DOOR HANDLE

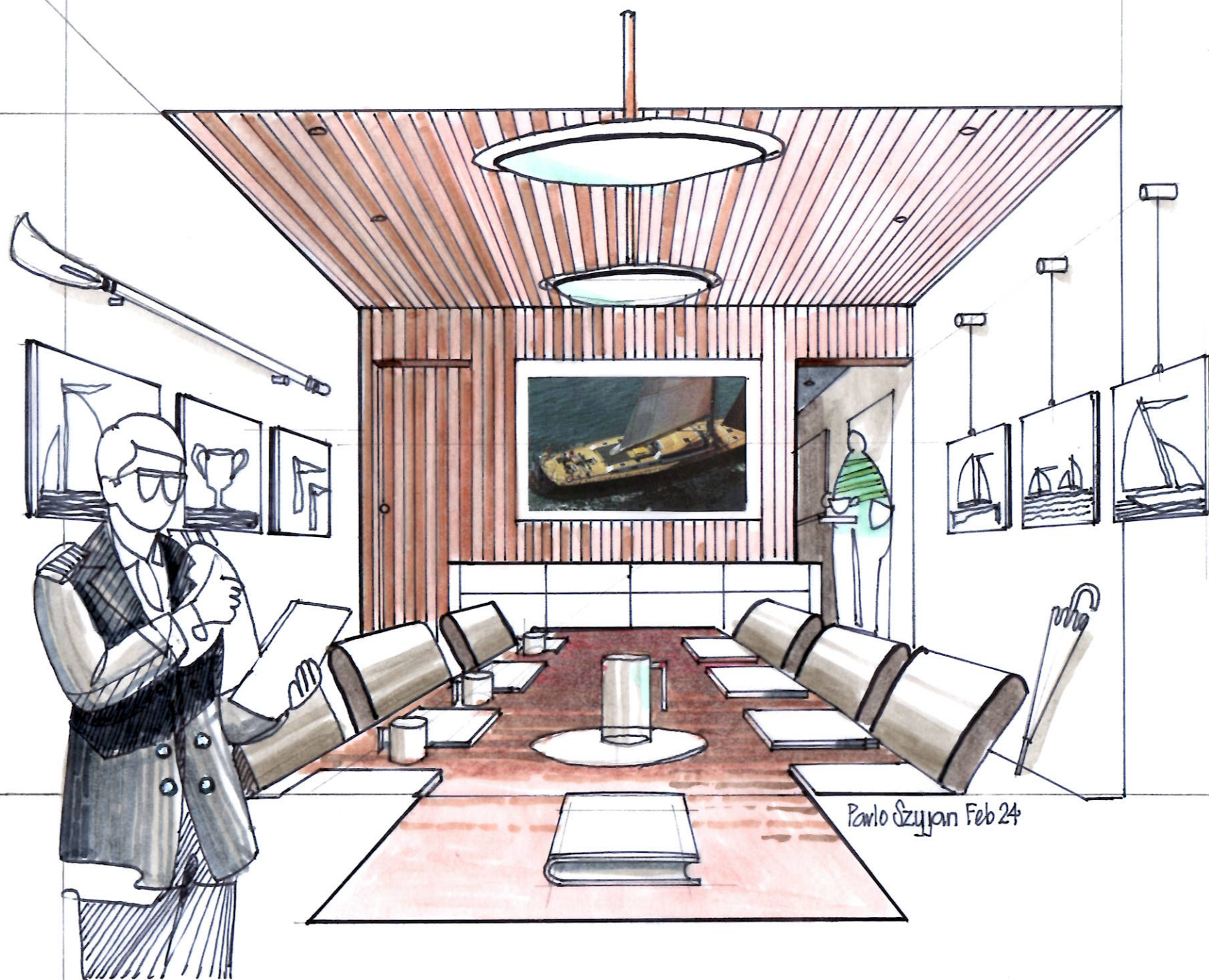


SAMPLE OF ROSEWOOD / PRACTICAL MATERIAL

● CLAREMONT YACHT CLUB RENOVATION
ARCFORMS DESIGNER
DRAWN PAVLO SZYJAN STUDIO
5 MARCH 24.

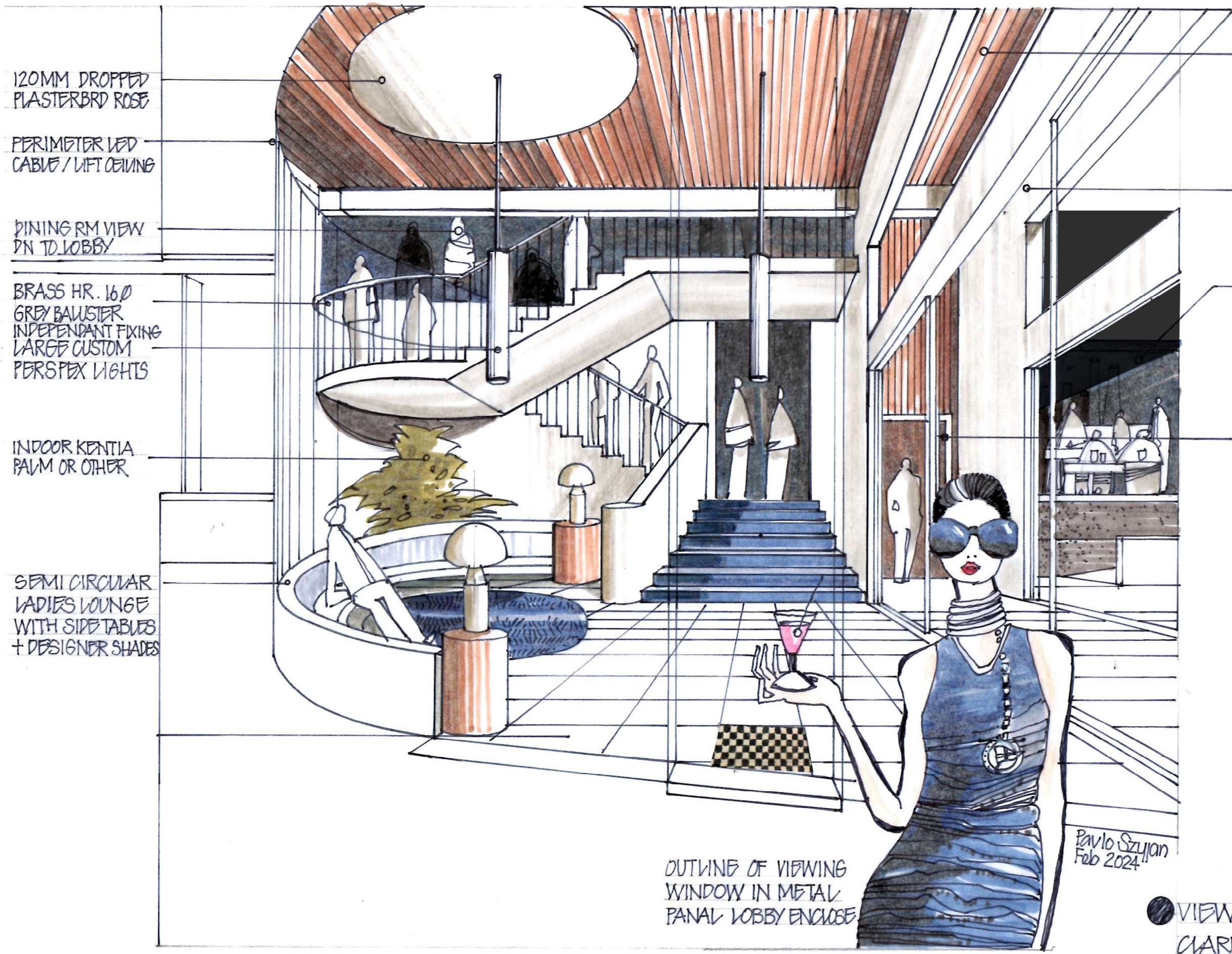
SHEET 22

S F 34R2



Pawlo Szyjan Feb 24

● VIEW TO REAR OF BOARDROOM REV 2
CLAREMONT YACHT CLUB RENO
ARCFORMS DESIGNER
PAWLO SZYJAN STUDIO / DRAWN
DATE 5 FEB 2024.



120MM DROPPED
PLASTERBRD ROSE

PERIMETER LED
CABLE / LIFT CEILING

DINING RM VIEW
DN TO LOBBY

BRASS HR. 160
GREY BALUSTER
INDEPENDANT FIXING
LARGE CUSTOM
PERSPEX LIGHTS

INDOOR KENTIA
PALM OR OTHER

SEMI CIRCULAR
LADIES LOUNGE
WITH SIDE TABLES
+ DESIGNER SHADES

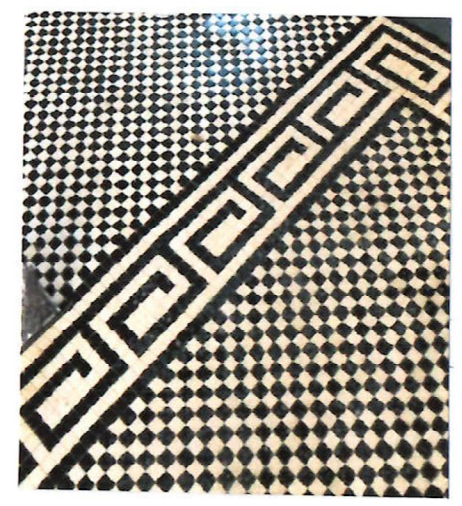
OPTION: AUST BATTEN
HARDWOOD CEILING

2ND INTERNAL GLASS
SLIDING DOORS

GROUND LEVEL BAR RAMP
IN FOREGROUND/ENTRY STAND



BRASS HANDRAIL OPTION



MOSAIC FLOOR OPTION

OUTLINE OF VIEWING
WINDOW IN METAL
PANEL LOBBY ENCLOSE

Pavlo Szujan
Feb 2024

VIEW INTO LOBBY FROM RIVER/SIDE
CLAREMONT YACHT CLUB
ARCFORMS
DRAWN PAVLO SZUJAN STUDIO
20 FEB 24